

**MICHAEL  
EVERETT**



## **CHEQUERS CLOSE**

WALTON ON THE HILL

[www.michael-everett.co.uk](http://www.michael-everett.co.uk)

# 7 CHEQUERS CLOSE

WALTON ON THE HILL KT20 7SR



LARGE LIVING ROOM



KITCHEN DINER



3 BEDROOMS



CLOAKROOM & SHOWER ROOM

**APROX. 1030.60 FT<sup>2</sup> | 95.75 M<sup>2</sup> (+ outbuildings)**

Located at the end of a small cul de sac of just 12 cottages an attractive period property featuring extended ground floor accommodation, a large south facing rear garden and a garden workshop/studio.

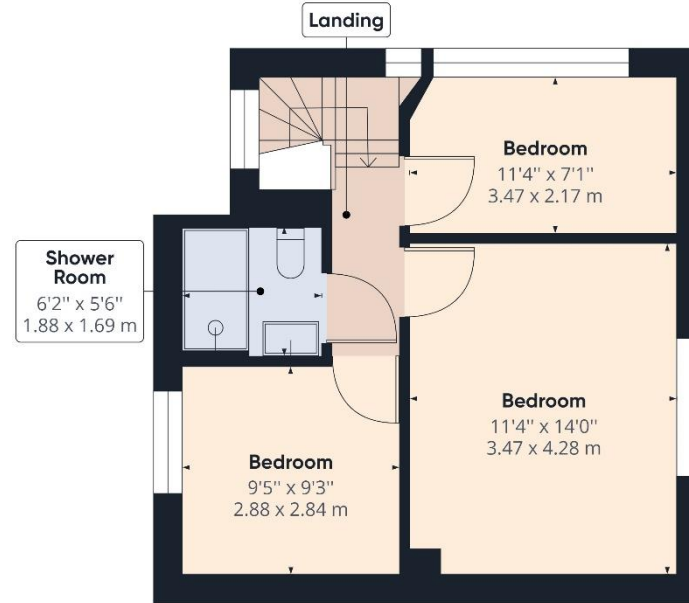
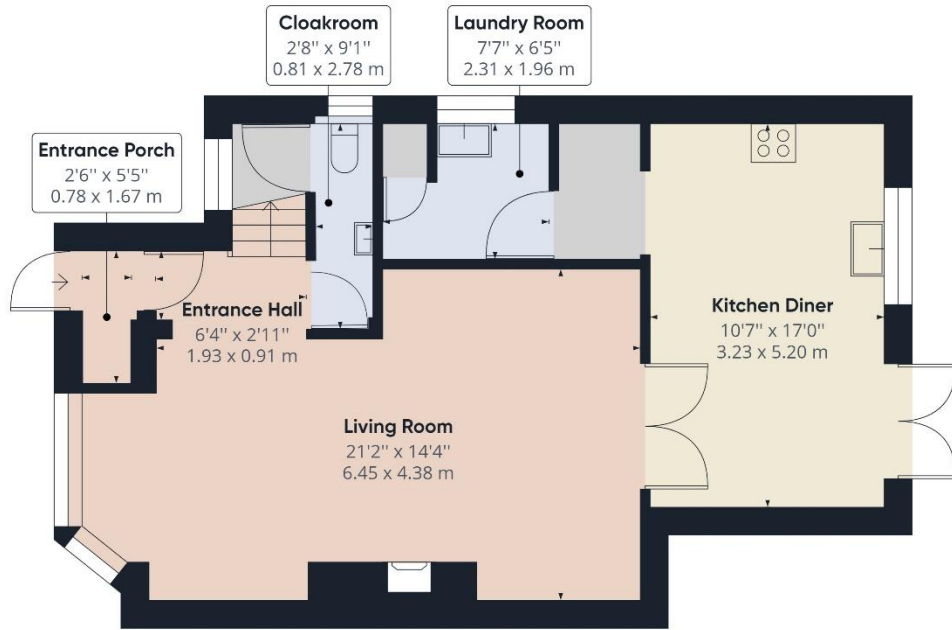
This lovely home is well presented throughout and boasts a large though living room with an open fireplace, a spacious kitchen diner with a vaulted ceiling and skylights, a utility room and ground floor cloakroom. On the first floor there are three bedrooms and a shower room.

Outside, there is parking to the front for 2 cars, a side courtyard and a pretty rear garden that enjoys a sunny aspect and extends to approximately 165ft. At the end of the garden there are two large timber framed outbuildings, one being a workshop and the other a studio with power and water laid on, which is ideal for a home office.

Chequers Close is located close to the village centre within easy walking distance of the shops, pubs/restaurants and primary school. The open spaces of Walton Heath are also close at hand whilst Tadworth station is just over 1 mile away.

**ASKING PRICE: £640,000**







**WALTON ON THE HILL** 61 Walton Street, Walton-on-the-Hill, Surrey KT20 7RZ  
**01737 814877**



**IMPORTANT** We would inform prospective purchasers that these sales particulars have been prepared as a general guide only. A detailed survey has not been carried out, nor the services, appliances and fittings tested. Room sizes should not be relied upon for furnishing purposes and are approximate. If floor plans are included, they are for guidance only and illustration purposes only and may not be to scale. If there are any important matters likely to affect your decision to buy, please contact us before viewing the property.

michael-everett.co.uk